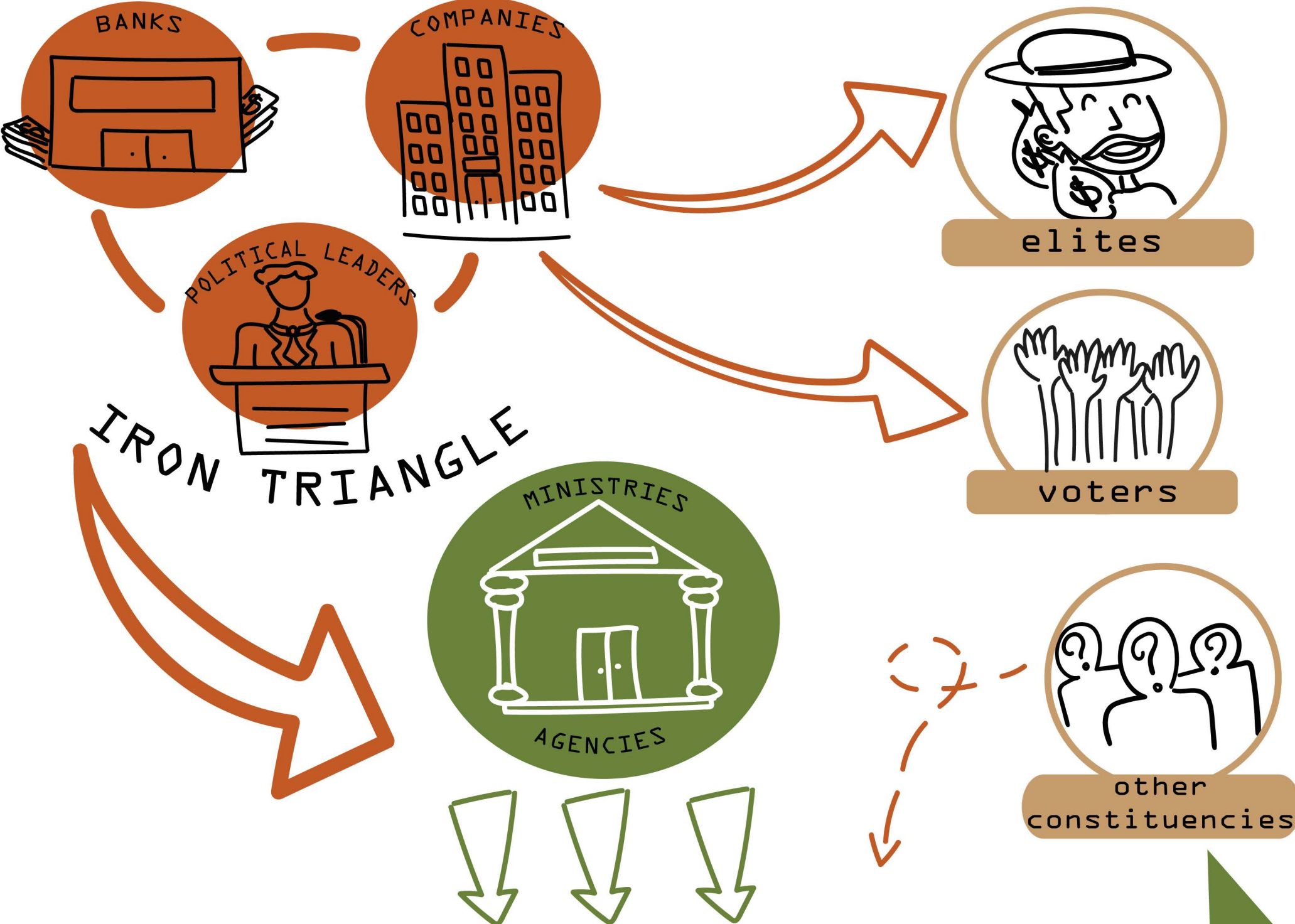
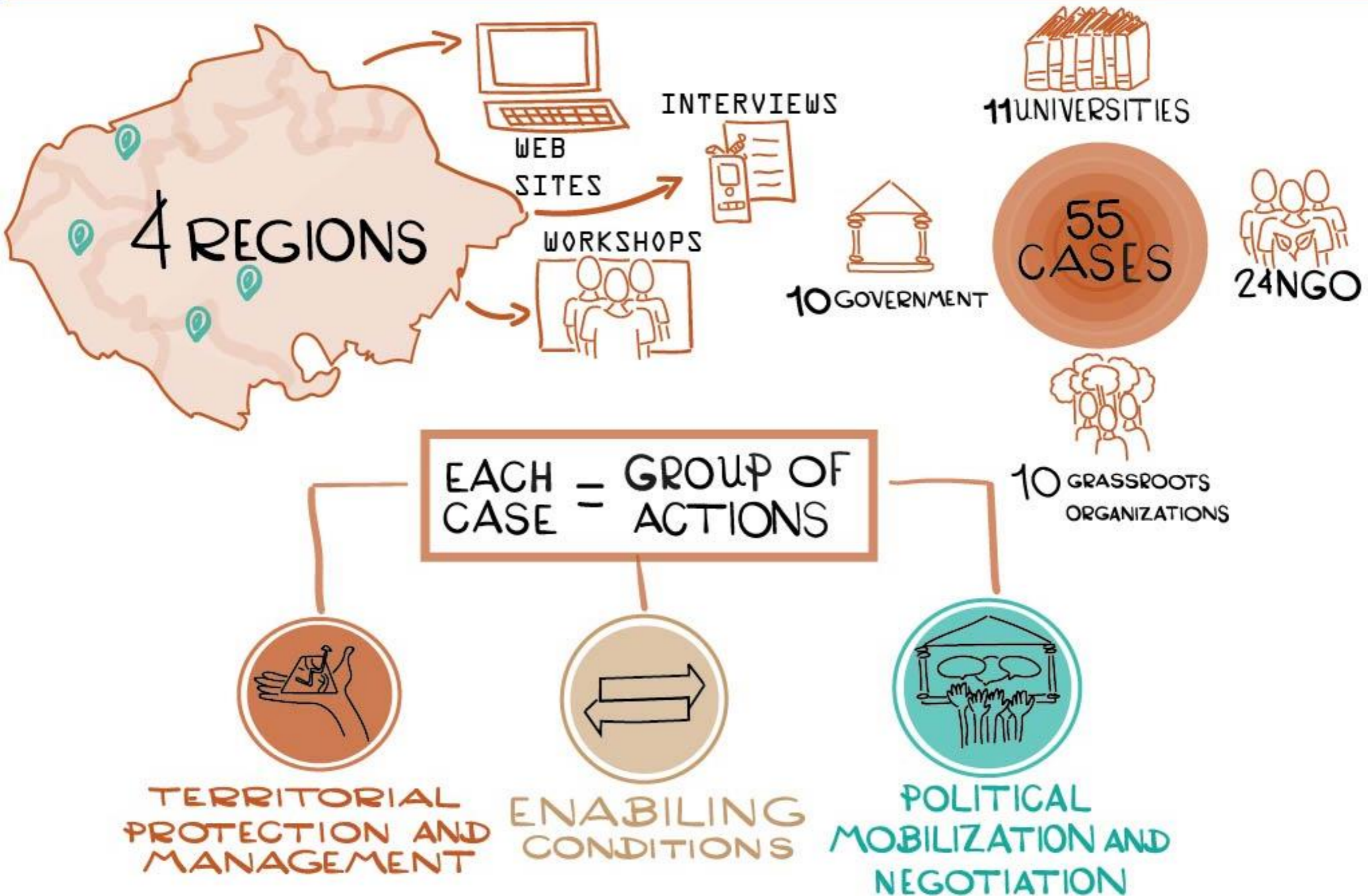


Business as usual infrastructure initiatives



Planning and Implementation

METHODOLOGY



ANALYSIS

RELEVANCE



EFFECTIVENESS



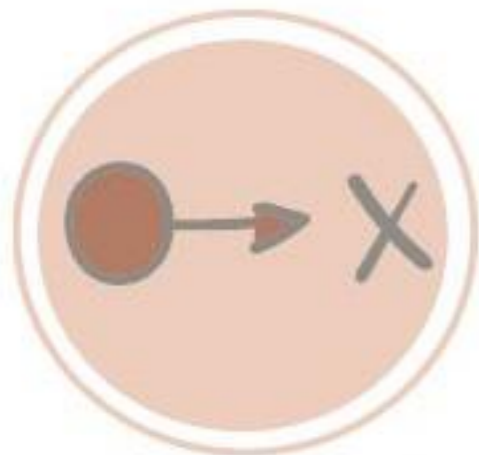
20-1AC-F-SSAC

3

2

1

0



Which are the most commonly used actions?



Highly effective strategies



What type organizations use those strategies?

GOVERNANCE AND INFRASTRUCTURE



TERRITORIAL PROTECTION AND MANAGEMENT

POLITICAL MOBILIZATION AND NEGOTIATION

ENABLING CONDITIONS



actions
4-5
per organization



MOST COMMON



highly effective cases
50%
grassroots organizations



2
AVERAGE
RELEVANCE



1-15
AVERAGE
EFFECTIVENESS



RESULTS



POLITICAL
MOBILIZATION

AND
NEGOTIATION



CONCLUSION



support



support



AWARENESS RAISING



2°



1°



3°

POLITICAL MOBILIZATION

AND NEGOTIATION



CONCLUSION



1°



3°

POLITICAL MOBILIZATION AND NEGOTIATION



CONCLUSION