

SOCIOBIOECONOMY

INTEGRATED CONCEPT BASED ON LOCAL EXPERIENCE

Recognition of everyday actions and practices

It has to do with quality of life, traditional practices, the development of human capacities, and respect for nature

TERRITORIAL MANAGEMENT

MONITORING



PROTECTION



PRODUCTION



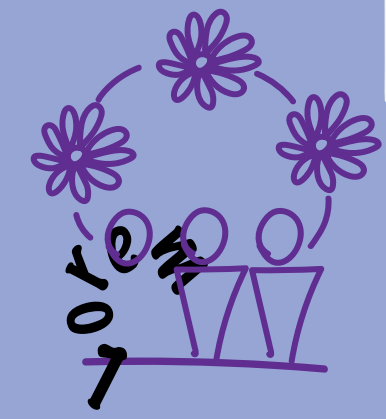
AGROECOLOGY

Quality food, without toxins and valuing local cultures

CONCEPTS

PANEL 6 - SOCIOBIOECONOMY AND TERRITORIAL MANAGEMENT

EXPERIENCES



ETHNO-ENVIRONMENTAL MANAGEMENT PLANS

Holistic view of indigenous practices and well-being

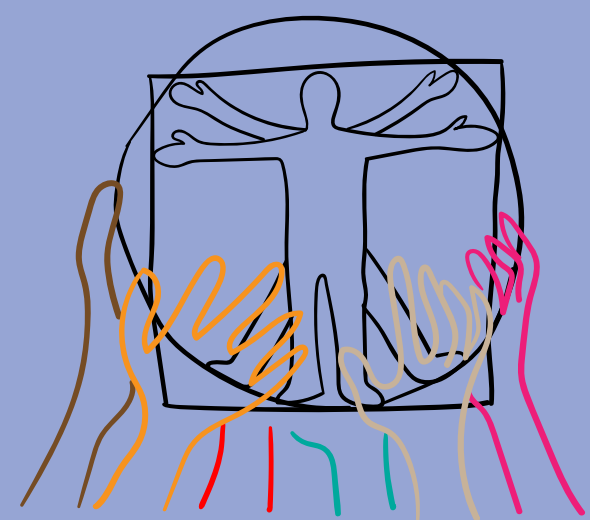
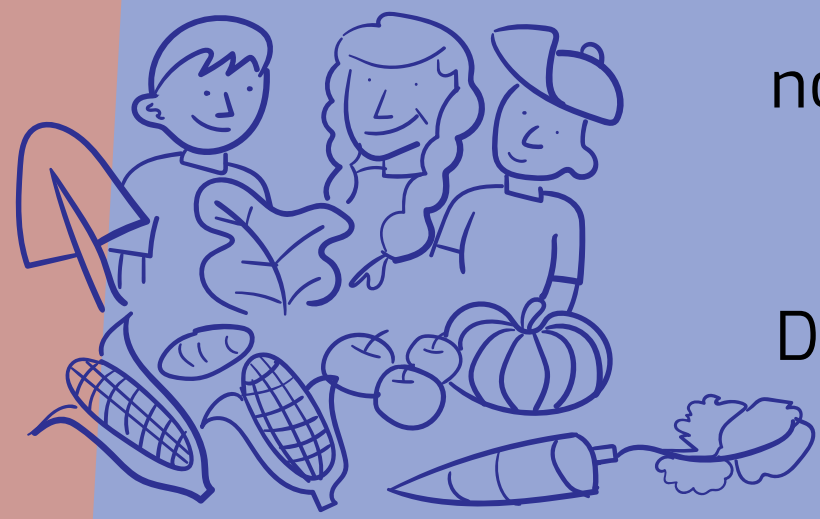
"We don't want anything halfway"

Monitoring with use of technologies- drones, GPS, apps (E.g., Uru-eu-wau-wau/Rondônia)

TRAINING

for interacting with the non-Indigenous world of value chains

Dissemination and exchange of knowledge on agroforestry systems



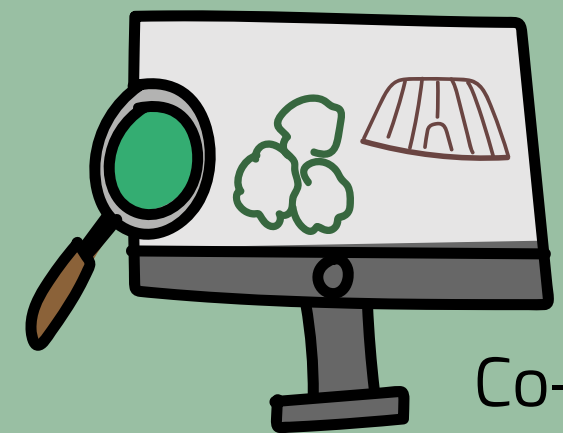
FUTURE ACTIONS

IMPLEMENTATION OF LIFE AND TERRITORIAL MANAGEMENT PLANS

Support the preservation of the territory through production

Support and strengthen of existing processes

INTERCULTURAL DIALOGUE AND EXCHANGE



Co-research based on concepts and empirical experiences of communities

